

## Useful Contacts...

### ■ Choice Advice

A free, impartial and confidential advice service for parents and carers of children who are moving from primary to secondary school.

**Freephone: 0800 988 80 42**

**Email: [choiceadvice@gloucestershire.gov.uk](mailto:choiceadvice@gloucestershire.gov.uk)**



### ■ Parent Partnership Service

Parent Partnership Service provides confidential, impartial advice to parents and carers whose children have special educational needs.

**Freephone: 0800 158 36 03**

**Email: [pps@gloucestershire.gov.uk](mailto:pps@gloucestershire.gov.uk)**

**Online: [www.glospps.org.uk](http://www.glospps.org.uk)**

Gloucestershire County Council  
Children and Young People's Directorate  
Shire Hall  
Westgate Street  
Gloucester GL1 2TG



**If you don't know who to ask... ask us!**

**Telephone:** 0800 542 02 02  
(Mon – Fri 9am to 5pm.  
Answer machine at all other times)  
**Direct line:** 01452 427362

**Fax:** 01452 544010

**Email:** [familyinfo@gloucestershire.gov.uk](mailto:familyinfo@gloucestershire.gov.uk)

**Text:** 07769 965 118

### **Family Information Service**

Shire Hall  
Westgate Street  
Gloucester GL1 2TG

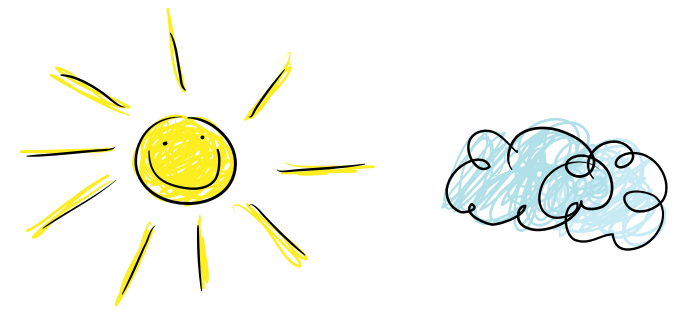
We can produce this document in braille, in large print, on audio tape and in other languages. If you would like a copy in one of these formats, please phone **01452 426504**



Gloucestershire Children and Young People's Strategic Partnership



**Gloucestershire**  
COUNTY COUNCIL



CYP00183 Nov 08

# Family Information Service

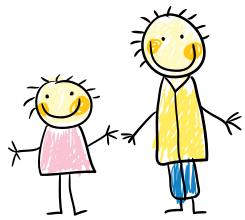


**glosfamilies directory .org.uk**

Gloucestershire Children and Young People's Service Directory



**Gloucestershire**  
COUNTY COUNCIL



# Family Information Service



**glosfamilies directory**.org.uk

Gloucestershire Children and Young People's Service Directory

We provide **information and advice** to families with children aged 0 to 19. All information is free and impartial.

Raising children can be stressful and it can be difficult to know where to go for information. That's where the Family Information Service (FIS) can help with advice on...

- Nurseries
- Pre-schools / playgroups
- Childminders
- Out of school clubs
- Holiday play schemes
- Sport and leisure clubs
- Family leisure activities
- Choosing childcare
  - things to look for, questions to ask
- Free early learning for three and four year olds
- Support for children with additional needs and / or disabilities
- What to do if you are concerned about childcare



“

If we are unable to give you the answer straight away, we will do some research and get back to you.

”



## Outreach

We also offer an Outreach Service providing:

- Face-to-face advice and guidance.
- Activities and information sessions for families.
- Representation at family events across the county.

For more information or if you would like the Outreach Team to come to one of your events call us on **01452 427382**

 **freephone 0800 542 02 02**